

# Kid Konnection



April 2024

## Message from the Director: Janet Boutin

With the arrival of Spring, we are very aware of the many changes around us. We are especially aware of the changes in all the children. They are growing and maturing before our eyes.

April holds a special celebration for St. Peter's School, The Week of the Young Child. The purpose of this week, April 9th—12th is to draw positive attention to the needs of young children and to emphasize the importance of quality early childhood education. We plan to host many hands on learning experiences at the School: music, math, tools/tinkering, science experiments, nature walks and free art. Our activities will focus on this year's NAEYC theme "Early Years Are Learning Years."

Also in April, we will start our School Board's Annual Mother's Day Campaign. Our Campaign will span from April 9th – May 8th. This year the McCaskill Endowment of St. Peter's Church will match all donations up to \$18,000! Please indicate special mothers and grandmothers on your donation card. Our campaign will end with our students honoring their mothers and grandmothers in our schoolwide Mother's Day Chapel on Wednesday, May 8th. Your contributions allow wonderful schools like ours to thrive and grow. Thank you in advance for your support of St. Peter's School and its children.



The great gift of Easter is hope ...

-Basil Hume

## WE ARE SO BLESSED ...

- **Childs Family** for block sets.
- **McDonald Family** for a rodeo exhibition with their horse.
- **Schneider Family** donated kitchen set and toy food/dishes.
- **Key Family** for donating amazing card-board books.
- **Jordan Family** for extra tennis shoes.
- **Blalock Family** for a waffle block set.
- **McCaskill Endowment** of St. Peter's Church will match donations to the School's Scholarship Program up to \$18,000. We are so grateful!



## Announcement!

The McCaskill Endowment of St. Peter's Church will match your donation up to \$18,000 to the School's Scholarship Program!

Click Here To Donate: [Scholarship Program](#)

Thank you McCaskills!



## Important Dates

**SCHOOL CLOSED:** FRIDAY, APRIL 1ST FOR EASTER BREAK.

**ALL-SCHOOL EASTER CHAPEL:** WEDNESDAY, APRIL 3TH. 9:00 AM IN CHURCH.

**PARENT ASSOCIATION MEETING:** FRIDAY, APRIL 5TH @ 8:45 A.M. IN TUCKER HALL/MPR.

**SCHOOL CLOSED:** MONDAY, APRIL 8TH—SOLAR ECLIPSE

**WEEK OF THE YOUNG CHILD:** APRIL 9TH THRU APRIL 12TH. CELEBRATE EARLY YEARS ARE LEARNING YEARS.

**ANNUAL MOTHER'S DAY CAMPAIGN:** APRIL 9TH TO MAY 8TH.

**SCHOOL CLOSED:** MONDAY, APRIL 15TH.

**SCHOLARSHIP 2024-25 DEADLINE:** TUESDAY, APRIL 16TH.

**SCHOOL BOARD MEETING:** MONDAY, APRIL 22ND.

**ALL SCHOOL RECYCLE/EARTH WEEK:** APRIL 22ND TO APRIL 26TH. LEARN ABOUT RECYCLING AND MAKE RECYCLED ART.

[SEE OUR 2024-25](#) CALENDAR ON THIS WEBSITE. START PLANNING DAYS OFF AND VACATIONS NOW.



## St. Peter's Church



Visit the Church Facebook to see pictures of fun activities at school!



---

## Dress Code

Children are expected to wear comfortable, casual, wash and wear clothing to school.



## Tennis Shoes

should be worn at all times. Sandals, boots, and other hard-soled shoes are not appropriate or safe for the playground. It is also recommended that clothing worn be easy for your child to get on and off by themselves (especially to potty themselves).

## Pesticides on Campus

The State of Texas requires that our school families know that pesticides are used on our campus. St. Peter's School is treated quarterly by a licensed pest control operator.

Janet Boutin,  
School Director  
830-257-0257



---

# Health and Safety At School

---

Dear School Families,



## For the safety of all . . .

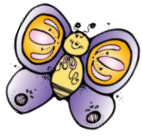
Please slow down when entering our parking lot and refrain from using your cell phone.

**Watch for our little ones!**



St. Peter's School is an official City of Kerrville School Zone and using cell phones is not permitted!





# Parent Pages



In March and April all of our classes observe the life cycle of the Painted Lady Butterfly.

## All About Painted Lady Butterflies

### Where is home?

The Painted Lady is probably the most widespread butterfly in the world.

They are found all over the North American continent, ranging north into the sub-arctic and south to Panama. Painted Ladies are also found in Asia, Africa, and Europe—they especially like living near flowery meadows and mountain tops.

These butterflies migrate from south to north in the late spring. In cold climates, you can see Painted Ladies between March and October. In some southern deserts, they live all year round.

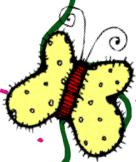
### What does it look like?

The butterfly has four wings—two hindwings and two forewings—that are symmetrical in pattern and shape. The upper surface of Painted Lady Butterfly wings is mostly black, brown, and orange. There are also some white spots and red and blue markings. The underside of the wings are gray, with white and red markings. Butterflies have three pair of legs – each divided into five parts. At the end of the legs are tiny spurs that help them land and stay on plants or perches.

### Fun Facts:

- Butterflies are solar-powered! They need the sun to fly.
- Male Painted Ladies have smaller abdomens than females.
- Favorite butterfly flowers: aster, cosmos, thistle, and buttonbush.
- Favorite caterpillar plants: thistle, mallow, hollyhock, malva, and sunflower.
- Butterflies are diurnal (active during the day).
- Painted Lady Butterflies see more patterns, a wider range of color, and more shades of green than people do.
- The tiny scales attached to butterfly wings give the wings their color.
- Butterflies have taste sensors on their legs.

Did You Know...  
There are about 125,000 known species of butterflies and moths in the world—approximately 700 species of butterflies in North America alone!





# Over the Moon

Please Join Us!  
St. Peter's School Annual

# Spring Fling

Bring The Whole Family!

**Wednesday , May 1st**  
**Cailloux Theater**  
**(next to school)**

**Time Line:**

**5:00 pm .. Silent Auction**  
**6:15 pm .. Students Checked In**  
**6:30 pm .. Program Begins**